

TTi

Bettering Your
Education

THE
HEART
OF
TSHWANE



Find Us
"Pretoria CBD"

Tshwane Technical Institution is located in the City of Tshwane, specifically in Pretoria Central, where it is easily recognizable and accessible.

190 Thabo Sehume St
Bank Towers Building, First Floor, 101
Pretoria
0002


 Google Maps



TEL: 087 265 5890

 info@tshwanetechnicalinstitute.co.za

 www.tshwanetechnicalinstitute.co.za

 068 398 4826 | 062 016 1481

Working Hours.

Monday – Friday:
8:00 – 16:00

Saturday:
8:00 – 13:00



Connect to Us
"Digital World"



Registration & Accreditation

Your education holds significant importance for both you and us. Choosing the right institution for your studies and career path is among the most crucial decisions you will make in your life. This choice represents an investment of your time, effort, and financial resources into your future. By enrolling in a registered and accredited institution, you can rest assured that the courses or programs you complete will be credible and widely recognized.



Tshwane Technical Institution is registered with the Department of Higher Education and Training (DHET) as a Private college in terms of section 31(3) of the Continuing Education and Training Act, 2006 (Act No. 16 of 2006) and Regulation 12(4)(b) of the Regulations for the Registration of Private Further Education and Training Colleges, 2007. DHET Examination Centre No. 0899994808



Tshwane Technical Institution is Accredited by Quality Council for Trade & Occupations (QCTO) Accreditation No(s).
07-QCTO/SDP180222,
07-QCTO/SDP230523050051
07-QCTO/SDP131124105343
07-QCTO/SDP131124104944
07-QCTO/SDP251124144946



Any National N Diplomas and Certificates that Tshwane Technical Institution offers have thumps up from the QCTO and DHET. This means you will leave Tshwane Technical Institution with a fully recognized Qualification of certificate and be able to pursue your professional career productively.

NATED Engineering Studies

Report 191 NATED Engineering programmes is a qualification that is designed to equip students with theoretical and practical skills. There are also skills and knowledge they acquire during the learning process that includes technical and workplace learning components.

NATIONAL CERTIFICATE & DIPLOMA PROGRAMMES

- Electrical Engineering (Heavy Current)
- Instrumentation
- Electrical Light Current Electronics
- Mechanical Engineering
- Civil Engineering
- Chemical Engineering

GCC NATED Engineering Required Subjects

- Electrotechnical Engineering
- Mechanical Engineering

NATIONAL N DIPLOMA

This qualification is aimed primarily at giving the learner technical, theoretical knowledge, practical knowledge and workplace knowledge and skills required in their chosen occupational/vocational area. The design of the qualification is such that it enables learners to progressively obtain the qualification by completing the related N4, N5 and N6 courses in a particular vocation/occupational area, either separately with breaks in between, or in one extended study period of a year or 18 months and then to apply the knowledge and skills learned in the workplace for an extended period. The N4+N5+N6, regardless of the manner in which they are completed, must be followed by or integrated with the relevant 18 or 24 months of practical workplace learning for the learner to be awarded the National N Diploma.

NQF Level 6
Credits: 360.

NON-NATIONAL CERTIFICATE PROGRAMMES

- Installation Rules
- Spec. Electric. Install. Codes

Registration
Fee

R600.00

Business & Utility Studies

N4–N6 Business and Utility Studies is a qualification that prepares students for careers in business and management. The course is typically completed over 18 months, with each level taking six months to complete. Students receive a certificate for each level they complete.

NATIONAL CERTIFICATE & DIPLOMA PROGRAMMES

- Human Resources Management
- Management Assistant
- Business Management
- Financial Management
- Marketing Management
- Public Management
- Public Relations
- Tourism
- Edu care (ECD)

Occupational Qualifications

An occupational qualification is a credential that is associated with a specific trade, occupation, or profession. It is a result of work-based learning and consists of three components: knowledge, practical skills, and work experience.

- Health Promotion Officer
- Office Administration
- Project Management

**Free
Practicals**



50%

BURSARIES AVAILABLE!

Why Choose Us?

Because your future is our top priority.....

- 50% BURSARIES AVAILABLE
- Career guidance and Counselling
- Assistance with Application for SACE
- Free Wi-Fi at our Facility
- Affordable fees & Quality Teaching

- Flexible study options
- Clean Environment
- Virtual Learning offered

Study Options

- Full time Classes
- Part-time Classes
- Distance Learning (Online Classes)
- Exam Only

Free Practical for Students Studying;

- Electrical Engineering
- Mechanical Engineering
- Edu-care (ECD)
- Project Management
- Health Promotion Officer
- Office Administration

Free basic computer skills for all students!!

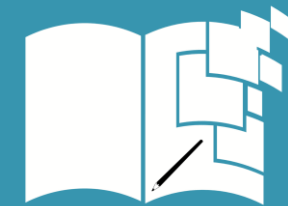
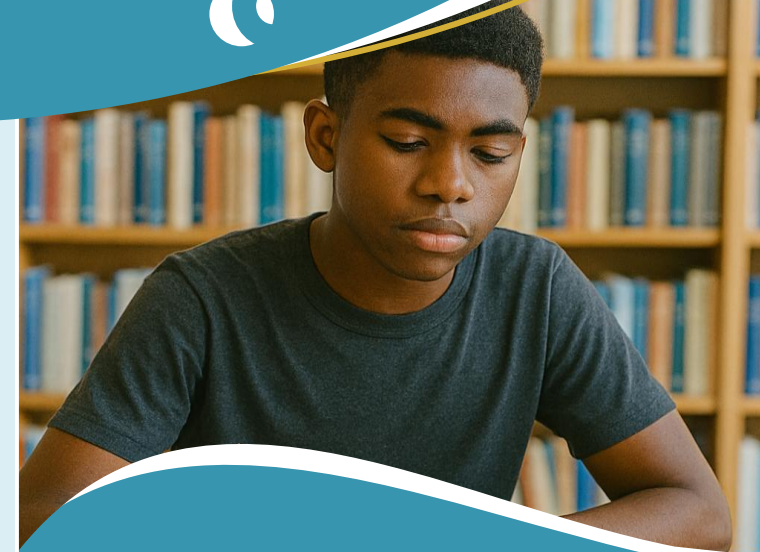
Apply Today
& secure your space

TTi



Scan To Register or visit
www.tshwanetechnicalinstitute.co.za

2026 Admissions



Tshwane Technical Institution
Bettering Your Education

PROSPECTUS

Registered Private FET College
DHET Exam Centre No. 0899994808
Accreditation No. QCTO/SDP180222

**Matric
Upgrade**

